

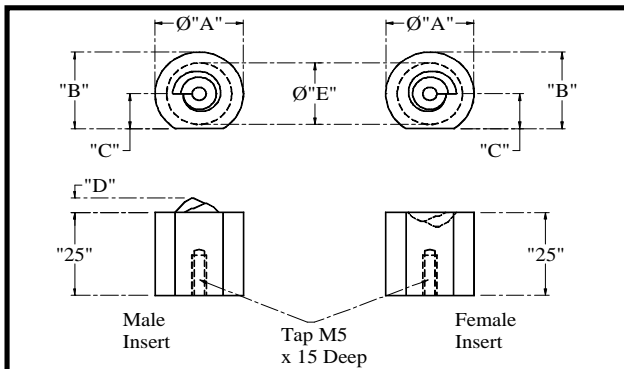
CNC Turret and Press Brake Tooling



The High Torque System is very versatile and can be incorporated into punch press tooling systems including Thick Turret, Thin Turret and Trumpf.

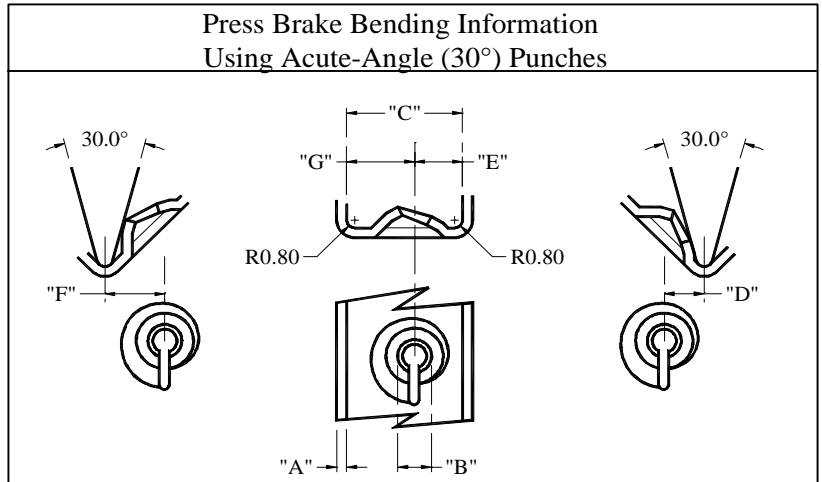


Most of the major tooling contractors are aware of our system and they will assist you in evaluating your tooling needs tailored towards your production requirements and the machine you are using. If you have a tooling contractor who is unaware of the system, then we will be happy to work with them to meet your requirements.



Standard forming inserts used for CNC Turret Tooling, see previous page for dimension details.

The table below indicates how close to the formed helix, a bend line can be formed using acute angle press brake tooling



Material Thickness "A"			Screw Ø	Dimensions				
Imperial	UK Wire	Metric		"C"	"D"	"E"	"F"	"G"
0.020/0.024	25	0.5/0.6	3	8.9	3.0	3.8	4.3	5.1
			3.5	9.9	3.5	4.3	4.8	5.6
			4	9.9	3.5	4.3	4.8	5.6
			5	10.9	4.0	4.8	5.3	6.1
0.028/0.032	22/21	0.7/0.8	6	11.9	4.5	5.3	5.8	6.6
			3	10.1	3.5	4.3	5.0	5.8
			3.5	10.1	3.5	4.3	5.0	5.8
			4	10.1	3.5	4.3	5.0	5.8
0.036/0.040	20/19	0.9/1.0	5	11.1	4.0	4.8	5.5	6.3
			6	12.1	4.5	5.3	6.0	6.8
			4	11.6	4.0	4.8	6.0	6.8
			5	12.6	4.5	5.3	6.5	7.3
0.043/0.047	18	1.1/1.2	6	13.6	5.0	5.8	7.0	7.8
			8	15.6	6.0	6.8	8.0	8.8
			10	17.6	7.0	7.8	9.0	9.8
			5	13.2	4.8	5.6	6.8	7.6
0.043/0.047	18	1.1/1.2	6	14.2	5.3	6.1	7.3	8.1
			8	16.2	6.3	7.1	8.3	9.1
			6	16.1	6.0	6.8	8.5	9.3
0.051/0.055	17	1.3/1.4	8	18.1	7.0	7.8	9.5	10.3
			6	17.6	6.5	7.3	9.5	10.3
0.059/0.063	16	1.5/1.6	8	19.6	7.5	8.3	10.5	11.3
			10	21.6	8.5	9.3	11.5	12.3
			12	23.6	9.5	10.3	12.5	13.3
			8	20.1	7.5	8.3	11.0	11.8
0.067/0.071	15	1.7/1.8	10	22.1	8.5	9.3	12.0	12.8
			12	24.1	9.5	10.3	13.0	13.8
0.074/0.078	14	1.9/2.0	10	25.6	9.8	10.6	14.2	15.0
			13	24.1	9.5	10.3	13.0	13.8
0.093/0.099	13	2.4/2.5	10	25.6	9.8	10.6	14.2	15.0